



LONGERHOUSE



- Crossroads-styled farmhouse architecture
- Four bedrooms, three and one-half bathrooms
- Spacious kitchen-dining-living design with banquette/window seat offering wonderful lake views
- Handsomely crafted stone fireplace
- Fully appointed kitchen design with Viking appliances
- Main level primary suite with masterful design details
- Expansive screened deck for outdoor living on main
- Upper level provides a bedroom, bath, den and optional fifth bedroom
- Fabulous lake level living with two bedrooms, family room, wet bar and covered terrace
- Thoughtfully designed with lake-prep storage room and inside lake level storage
- 3,064 sq. ft. of conditioned space

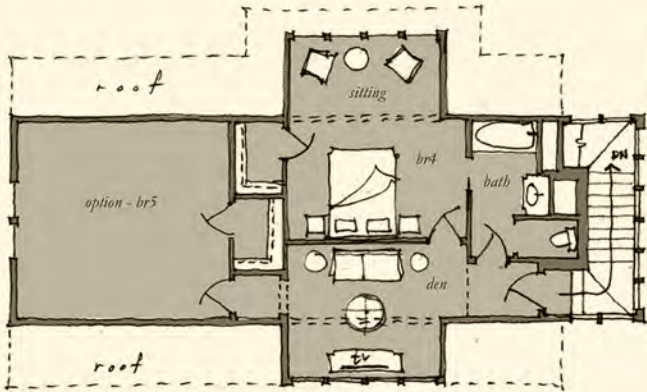
Lakeside Elevation



Street Side Elevation

PRICE: Pricing will depend on final features and lot selection.

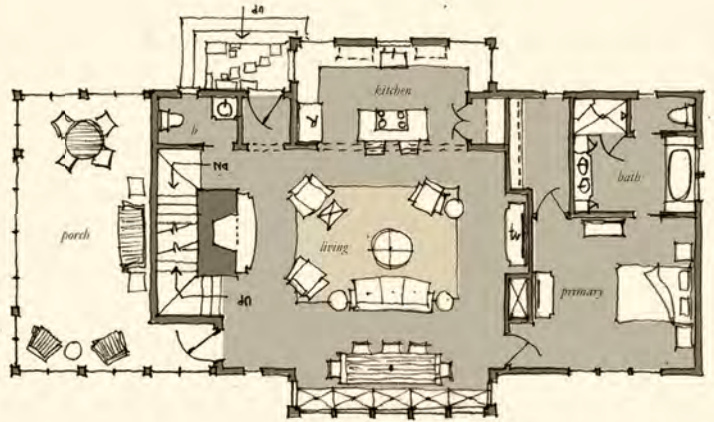
For additional information about Russell Lands On Lake Martin neighborhoods, call 256.215.7011 or visit www.RussellLandsOnLakeMartin.com.



Upper Level

LONGERHOUSE

493 Conditioned Sq. Ft.



Main Level

LONGERHOUSE

1,335 Conditioned Sq. Ft.



Lake Level

LONGERHOUSE

1,236 Conditioned Sq. Ft.

